



# **FRONTLINE**

INDUSTRIES, INC

## **ROTATING EQUIPMENT SPECIALISTS**

**PUMPS  
MOTORS  
FANS  
GEARBOXES**



[FRONTLINEINDUSTRIES.COM](http://FRONTLINEINDUSTRIES.COM)

## OUR MISSION

Reduce our customers' maintenance and operating costs while increasing the lifetime value and efficiency of their equipment.

## PRODUCTS

### Frontline Couplings

Stainless Steel Flexible Shaft Couplings designed & manufactured in-house

### Custom Mechanical Seals

Design, manufacturing & installation of mechanical seals for "hard to seal" applications

### Mechanical Seal Coolers

Designed for Boiler Feed Pump applications, manufactured in-house

### Toshiba Motors & Variable Frequency Drives

Authorized Stocking Distributor for Toshiba Low & Medium Voltage Electric Motors & VFDs

### Carbon Fiber Drive Shafts

Drive shafts utilizing our patented Frontline Coupling Hubs

### Frontline Shredder Pumps

Submersible Shredder Pumps from 2-20 HP

## INDUSTRIES SERVED

Power Generation

Chemical & Petrochemical

Pulp & Paper

Food & Beverage

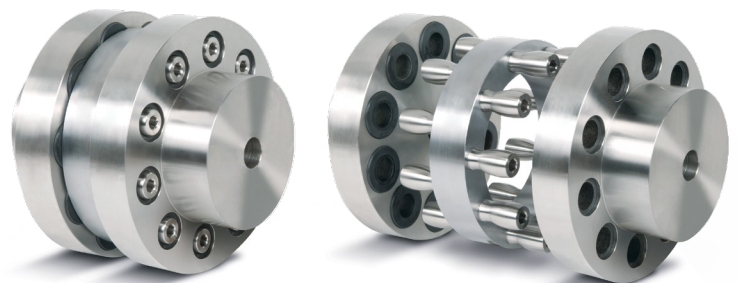
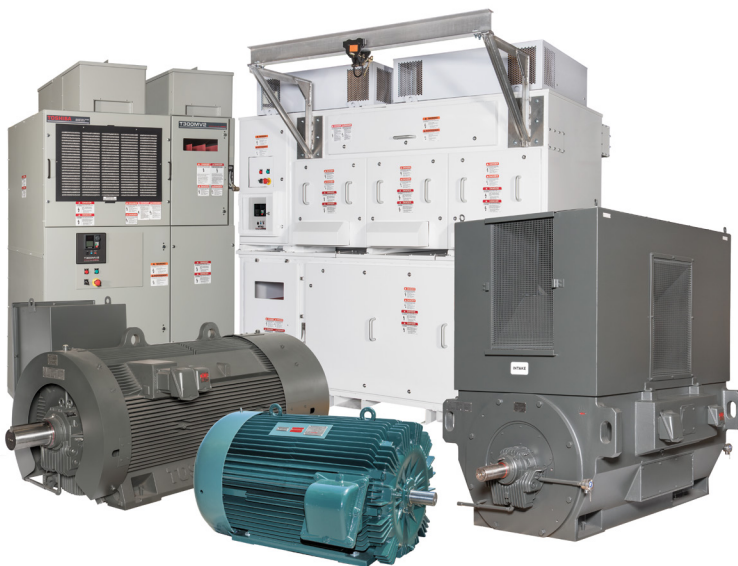
Pharmaceutical

Water / Wastewater

Healthcare

Metals & Minerals

Oil & Gas



**TOSHIBA**  
Motors & Drives

**FRONTLINE**  
COUPLINGS



## SHOP SERVICES

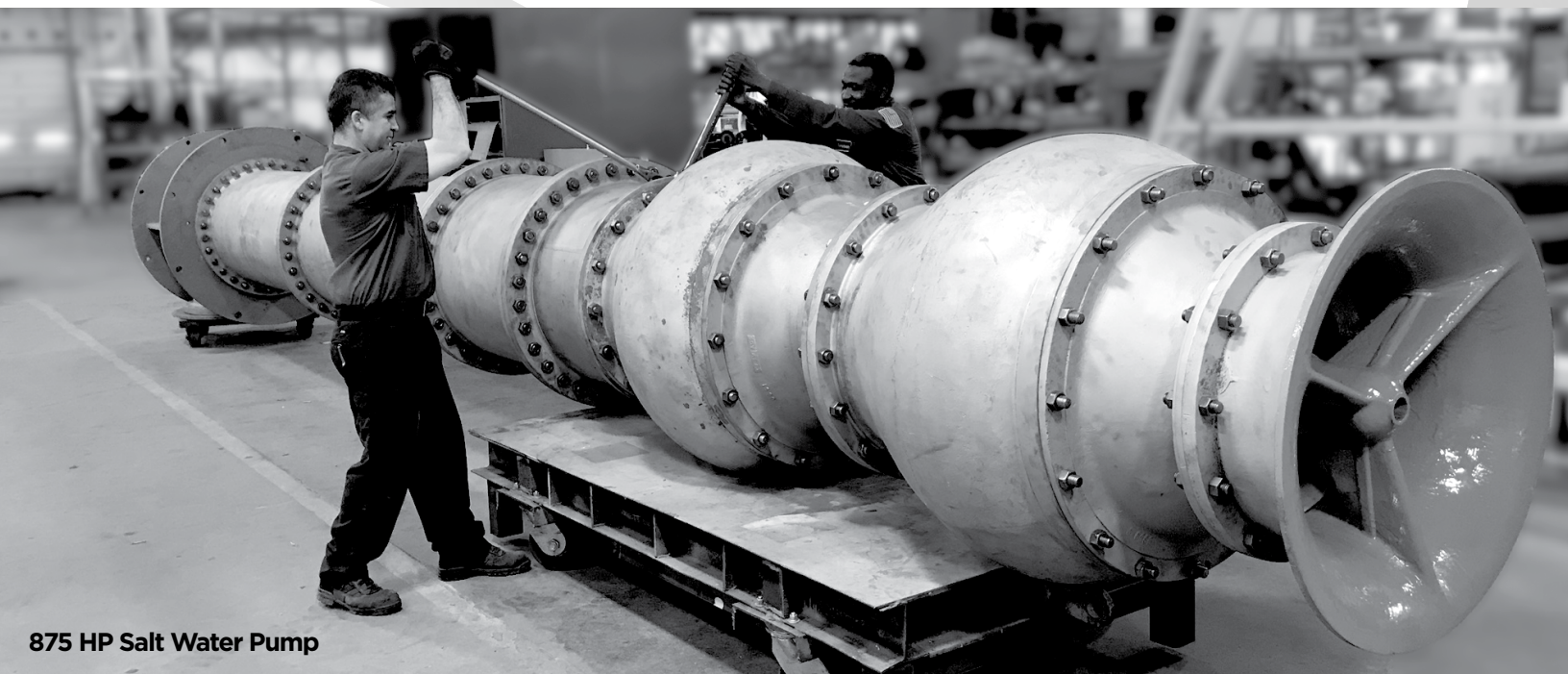
Industrial Pump Repair  
Mechanical Seal Repair  
Gearbox Repair  
Motor Repair  
Machine Shop Services  
Reverse Engineering  
Dynamic Balancing  
Valve Repair  
Custom Fabrication  
Sandblasting  
Epoxy & Ceramic Coating  
Non-Destructive Examination (NDE)  
ASME Certified Welding  
Hydrostatic Testing  
Gas & Fuel Loading Arm Repair

## FIELD SERVICES

Rigging, Removal & Installation  
On-Site Machining  
Fan Repair  
Dynamic Balancing  
Preventive Maintenance  
Laser Alignment  
Controls Service  
Vibration Analysis  
Troubleshooting  
ASME Certified Welding  
Condition Monitoring  
Shaft Voltage Testing

## ADDITIONAL CAPABILITIES

Detailed Engineering Reports  
CNC Machining Centers  
24/7 Emergency Service  
3-D Modeling / CAD Drawings  
X-Ray Fluorescence Material Analysis  
Submersible Pump Testing



875 HP Salt Water Pump



990 Chancellor Ave  
Irvington, NJ 07111

p: 973.373.7211  
f: 973.374.0365

sales@frontlineindustries.com  
**FRONTLINEINDUSTRIES.COM**